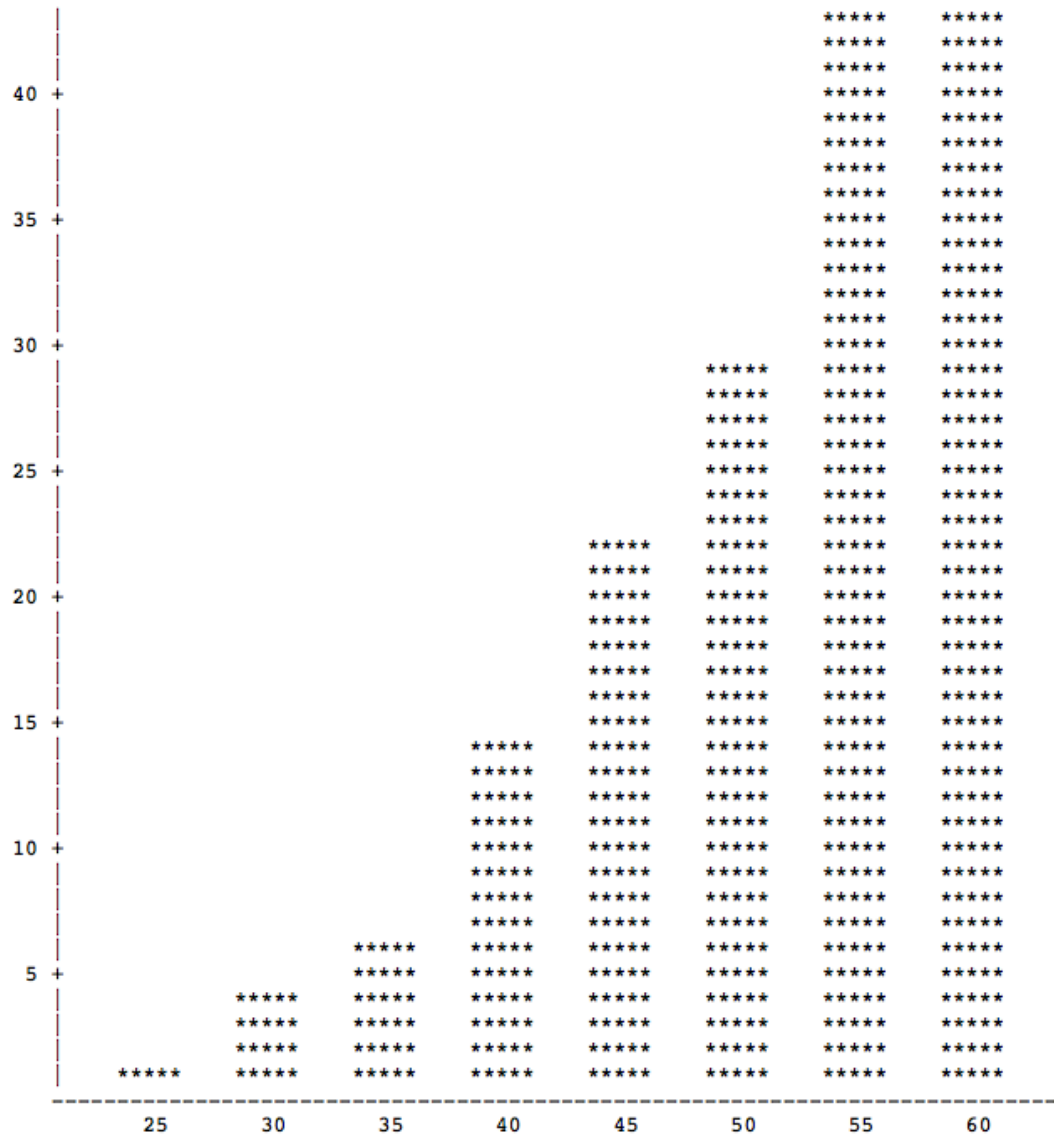


Frequency



total

Math 309 Fall 2016 Exam 1 Results
 response frequencies for enrolled students
 The FREQ Procedure

q1	Frequency	Percent	Cumulative Frequency	Cumulative Percent
A*	154	95.06	154	95.06
B	8	4.94	162	100.00

q2	Frequency	Percent	Cumulative Frequency	Cumulative Percent
B	1	0.62	1	0.62
C	1	0.62	2	1.23
D	8	4.94	10	6.17
E*	137	84.57	147	90.74
F	10	6.17	157	96.91
G	5	3.09	162	100.00

q3	Frequency	Percent	Cumulative Frequency	Cumulative Percent
B*	152	93.83	152	93.83
C	1	0.62	153	94.44
D	3	1.85	156	96.30
E	5	3.09	161	99.38
F	1	0.62	162	100.00

q4	Frequency	Percent	Cumulative Frequency	Cumulative Percent
A	8	4.94	8	4.94
B*	101	62.35	109	67.28
C*	36	22.22	145	89.51
D*	14	8.64	159	98.15
F*	3	1.85	162	100.00

q5	Frequency	Percent	Cumulative Frequency	Cumulative Percent
A	2	1.23	2	1.23
B*	147	90.74	149	91.98
C	1	0.62	150	92.59
F	12	7.41	162	100.00

q6	Frequency	Percent	Frequency	Percent
A	5	3.09	5	3.09
B	3	1.85	8	4.94
C*	28	17.28	36	22.22
D*	122	75.31	158	97.53
E	1	0.62	159	98.15
F	3	1.85	162	100.00

Cumulative Cumulative

q7	Frequency	Percent	Frequency	Percent
B*	123	75.93	123	75.93
E	4	2.47	127	78.40
F	4	2.47	131	80.86
G	31	19.14	162	100.00

q8	Frequency	Percent	Frequency	Percent
A	1	0.62	1	0.62
B	1	0.62	2	1.23
C	2	1.23	4	2.47
D	14	8.64	18	11.11
E*	103	63.58	121	74.69
F	14	8.64	135	83.33
G	27	16.67	162	100.00

q9	Frequency	Percent	Cumulative Frequency	Cumulative Percent
A	8	4.94	8	4.94
B	4	2.47	12	7.41
C	10	6.17	22	13.58
D*	135	83.33	157	96.91
E	5	3.09	162	100.00

q10	Frequency	Percent	Cumulative Frequency	Cumulative Percent
B	3	1.85	3	1.85
C	1	0.62	4	2.47
D*	110	67.90	114	70.37
E	40	24.69	154	95.06
F	8	4.94	162	100.00

q11	Frequency	Percent	Frequency	Percent
C*	157	97.52	157	97.52
D	4	2.48	161	100.00

Frequency Missing = 1

q12	Frequency	Percent	Cumulative Frequency	Cumulative Percent
A*	138	85.19	138	85.19
B	11	6.79	149	91.98
C	2	1.23	151	93.21
D	4	2.47	155	95.68
E	2	1.23	157	96.91
F	5	3.09	162	100.00

Math 309 Fall 2016 Exam 1 Results

17

10:49 Thursday, October 6,

2016

response frequencies for enrolled students

The FREQ Procedure

Cumulative Cumulative

Cumulative Cumulative

Math 309 Fall 2016 Exam 1 Results

10:49 Thursday, October 6,

2016

response frequencies for enrolled students

The FREQ Procedure

q11	Frequency	Percent	Cumulative Frequency	Cumulative Percent
C*	157	97.52	157	97.52
D	4	2.48	161	100.00

Frequency Missing = 1

q12	Frequency	Percent	Cumulative Frequency	Cumulative Percent
A*	138	85.19	138	85.19
B	11	6.79	149	91.98
C	2	1.23	151	93.21
D	4	2.47	155	95.68
E	2	1.23	157	96.91
F	5	3.09	162	100.00

Math 309 Fall 2016 Exam 1 Results
10:49 Thursday, October 6,

2016

exam mean for enrolled students

The MEANS Procedure

Analysis Variable : total

N	Mean	Std Dev	Minimum	Maximum
162	51.2345679	8.1343862	25.0000000	60.0000000